

**EDGE SYSTEM™** ELECTRODES

Works like you work.™

THE STANDARD IN MULTIFUNCTION ELECTRODES





Increase Patient Comfort

Decrease Skin Irritation

Increase Patient Safety

Minimize Delay in Therapy



## EDGE System Multifunction Electrodes

### Improve Patient Care

We know your number one goal is to provide the best in patient care by reducing time to treatment, increasing patient comfort and ensuring patient safety. From the time a patient is resuscitated on scene to the time the patient is released from the hospital, the patient may change providers and equipment several times. During the entire resuscitation chain, you need a quality therapy electrode that works like you work, with the patient in mind. EDGE System electrodes are multifunctional — enabling defibrillation, noninvasive pacing and ECG monitoring all in one and offering many advantages over other therapy electrodes in the market.

## Increase Patient Comfort Decrease Skin Irritation



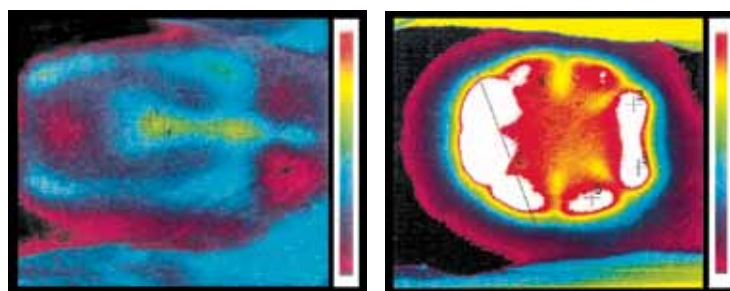
### Skin-friendly Hydrogel

- Designed to bond well to all skin textures
- Excellent adhesion to prevent electrode from detaching or lifting from the skin
- Excellent adhesion to diaphoretic patients
- Excellent electrical performance during pacing and defibrillation

The unique Edge design reduces the risk of burns commonly associated with defibrillation.<sup>1</sup> The EDGE System electrode is designed to distribute the current over the entire surface area of the electrode using patented technology rather than concentrating it at the edges.

### High Edge Impedence

Allows for even heat distribution which may reduce the risk of burns



EDGE SYSTEM

OTHER MANUFACTURER

Thermographic images taken after eight consecutive 360J MDS (Monophasic Damped Sine) discharges.<sup>1</sup> White indicates highest concentration of heat, where burning of the skin may occur. Blue indicates lower heat concentration. Monophasic Damped Sine shocks have higher peak currents than those of biphasic shocks and therefore may represent a more extreme case, however they are still useful in illustrating heat distribution.

## Minimize Delay in Therapy



Standardization across all levels of care is a critical factor in enabling you to respond quickly to initiate early defibrillation, minimize delays in therapy and provide your patient with the best chance of survival. This continuum of care extends from the defibrillator to the therapy electrodes you use.



## Reduced Skin Damage

High perimeter impedance reduced skin injury after cardioversion

	EDGE System Electrode	Standard Electrode
Damage score* (0 corresponds to no damage)	1.7	3.1

\*Damage score is based on histopathologic tissue evaluation from samples taken after cardioversion with monophasic waveforms. The dermatopathologist was blinded to the energy or electrode technology used.<sup>2</sup>

## Patient Safety – Tested, Proven

Ensure the safety of your staff and patients. Electrodes should be attached to your manual LIFEPAK defibrillator's original, unmodified therapy cable. Modified cables may not meet Physio-Control specifications and may invalidate product warranty. Other manufacturers' electrodes have not been tested to the stringent LIFEPAK specifications and may compromise patient or rescuer safety. Stick with the name you trust and the company that stands behind it.



Standardization is easy. EDGE System multifunction electrodes with the universal QUIK-COMBO connector allow you to plug them into any LIFEPAK device. Eliminate the need for electrode changes between phases of treatment and potentially reduce costs associated with applying multiple sets of electrodes to a single patient.

Your goal is a less than 90-minute door to balloon (D2B) time to improve survival among the half-million Americans who experience ST-segment elevation myocardial infarction (STEMI) each year.<sup>3</sup> EDGE System RTS radio-transparent electrodes will not interfere with visibility and may eliminate time spent repositioning x-ray images.

# EDGE System Multifunction Electrodes Pacing, Defibrillation and ECG Monitoring

## PRECONNECTED. 24 HOURS OF ECG MONITORING



EDGE System electrodes can perform up to 24 hours of ECG monitoring and deliver up to 50 shocks at 360J (25 for pediatric size electrodes) all while obtaining excellent adhesion to the patient.

EDGE System electrodes with REDI-PAK preconnect system allow connection to your LIFEPAK defibrillator/monitor prior to use, saving valuable time and potentially reducing time to shock during a code.

## PEDIATRIC AND INFANT/CHILD OPTIONS



EDGE System electrodes are available in pediatric sizes for use with manual monitor/defibrillators. We also offer Infant/Child Reduced Energy Defibrillation Electrodes that can be used with our LIFEPAK AEDs.

## RADIO-TRANSPARENT



EDGE System RTS Adult and Pediatric Electrodes are completely radio-transparent, eliminating the need to remove or change the electrodes during radiological procedures.

**ADULT**

**EDGE System Electrode with QUIK-COMBO Connector and REDI-PAK Preconnect System**

Catalog Number 11996-000017

- Electrode Shape:** Rectangular
- Electrode Size:** 15.1cm (5.95 in) x 13.3cm (5.24 in)
- Lead Wire:** 105.2cm (42 in)
- Conductive Adhesive Gel Contact Area:** 115cm<sup>2</sup> (17.98 in<sup>2</sup>)

**EDGE System RTS Electrode with QUIK-COMBO Connector**

Catalog Number 11996-000090

- Electrode Shape:** Rectangular
- Electrode Size:** 15.1cm (5.95 in) x 13.3cm (5.24 in)
- Lead Wire:** 60.1cm (24 in)
- Conductive Adhesive Gel Contact Area:** 115cm<sup>2</sup> (17.98 in<sup>2</sup>)

**EDGE System Electrode with QUIK-COMBO Connector**

Catalog Number 11996-000091

- Electrode Shape:** Rectangular
- Electrode Size:** 15.1cm (5.95 in) x 13.3cm (5.24 in)
- Lead Wire:** 60.1cm (24 in)
- Conductive Adhesive Gel Contact Area:** 115cm<sup>2</sup> (17.98 in<sup>2</sup>)

**EDGE System Electrode with FAST-PATCH® Connector**

Catalog Number 11996-000092

- Electrode Shape:** Rectangular
- Electrode Size:** 15.1cm (5.95 in) x 13.3cm (5.24 in)
- Lead Wire:** N/A
- Conductive Adhesive Gel Contact Area:** 115cm<sup>2</sup> (17.98 in<sup>2</sup>)

**EDGE System Electrode with FAST-PATCH Connector:** To pace use QUIK-COMBO configured devices with cable:

- Catalog Number 11110-000052 (inside U.S.)
- Catalog Number 11110-000053 (outside U.S.)
- Electrode Shape:** Rectangular
- Electrode Size:** 15.1cm (5.95 in) x 13.3cm (5.24 in)
- Lead Wire:** N/A
- Conductive Adhesive Gel Contact Area:** 115cm<sup>2</sup> (17.98 in<sup>2</sup>)

**QUIK-PACE® Noninvasive Pacing Electrodes with EDGE System Technology**

Catalog Number 11996-000042

- Electrode Shape:** Circular
- Electrode Size:** 13.3cm (5.24 in) diameter
- Lead Wire:** N/A
- Conductive Adhesive Gel Contact Area:** 81cm<sup>2</sup> (12.56 in<sup>2</sup>)

*QUIK-PACE Noninvasive Pacing Electrodes cannot be used for defibrillation.*  
*Shelf-life: guaranteed 12 months remaining at time of shipment from Physio-Control.*

**PEDIATRIC**

**Pediatric EDGE System RTS Electrode with QUIK-COMBO Connector**

Catalog Number 11996-000093

- Electrode Shape:** Rectangular
- Electrode Size:** 10.2cm (4.0 in) x 8.9cm (3.5 in)
- Lead Wire:** 60.1cm (24 in)
- Conductive Adhesive Gel Contact Area:** 52cm<sup>2</sup> (8.06 in<sup>2</sup>)
- Compatibility:** Use only with manual defibrillator/monitors

*For use on children up to 15kg (33 lbs).*  
*Shelf-life: guaranteed 12 months remaining at time of shipment from Physio-Control.*

**Infant/Child Reduced Energy Defibrillation Electrodes**

- Electrode Shape:** Rectangular
  - Electrode Size:** 10.2cm (4.0 in) x 8.9cm (3.5 in)
  - Lead Wire:** 106.7cm (42 in)
  - Conductive Adhesive Gel Contact Area:** 52cm<sup>2</sup> (8.06 in<sup>2</sup>)
  - Compatibility:** Use only with LIFEPAK 500 AEDs with a pink connector or any LIFEPAK CR Plus, LIFEPAK EXPRESS or LIFEPAK 1000 defibrillator
- Catalog Number 11101-000017

Starter Kit - English, Dutch, French, German, Spanish, Italian, Danish, Norwegian, Finnish, Swedish

Catalog Number 11101-000018

Starter Kit - English, Hungarian, Polish, Brazilian Portuguese, Iberian Portuguese, Spanish, Korean, Mandarin Chinese

Catalog Number 11101-000016

Infant/Child Reduced Energy Defibrillation Electrodes (replacement)

*Infant/Child electrodes are for use on children less than 8 years of age or less than 25kg (55 lbs).*  
*Infant/Child electrodes are not compatible with the QUIK-COMBO therapy cable used with manual defibrillators.*

**PERFORMANCE**

- (Applies to all products, unless otherwise noted.)
- Maximum Adhesion Time:** 24 hours
- Maximum ECG Monitoring Time:** 24 hours
- Maximum Number of Defibrillation Pulses:** 50 at 360 joules for adult size electrodes, 25 for pediatric size electrodes
- Maximum Pacing Duration:** 8 hours
- Shelf-life:** Guaranteed 18 months remaining at time of shipment from Physio-Control.

**ENVIRONMENTAL**

- (Applies to all products.)
- Atmospheric Pressure:** 797 to 429mmHg (-570 to 15,000 ft)
- Relative Humidity:** 0 – 95% (noncondensing)
- Operating Temperature Range:** 0°C to 55°C (32°F to 131°F)
- Long-Term Storage:** 15°C to 35°C (59°F to 95°F)

**ORDERING INFORMATION**

**Inside US:** Call 1.800.442.1142 and select option 6, or order online at our Physio-Control Web Store at <http://store.physio-control.com>  
**Outside US:** Contact your local Physio-Control representative



For more than 50 years, Physio-Control, maker of the renowned LIFEPAK defibrillators, has been developing technologies and designing systems that are legendary among first response professionals, clinical care providers and the community.

#### REFERENCES

- 1 Physio-Control, Inc. Internal data, 1996, reverified 2009.
- 2 Garcia LA, Pagan-Carlo LA, Stone MS, Kerber RE. "Increasing Electrode Perimeter Impedance to Modify the 'Edge Effect' Reduces Skin Burns After Transthoracic Countershock." *Circulation* 1997; 96(8) 1-386 (abstract 3137, American Heart Association, 70th Scientific Sessions).
- 3 McNamara RL, Wang W, Herrin J, et al. Effect of door-to-balloon time on mortality in patients with ST-segment elevation myocardial infarction. *J Am Coll Cardiol*. 2006;47:2180-2186.

All information including comparative statements are valid as of April 2009.

For further information please contact your local Physio-Control representative or visit [www.physio-control.com](http://www.physio-control.com).  
To order accessories online visit <http://store.physio-control.com>.



#### HEADQUARTERS / MANUFACTURING

Physio-Control, Inc.  
11811 Willows Road NE  
P. O. Box 97006  
Redmond, WA 98073-9706 USA  
Tel. 425 867 4000  
Toll Free. 800 442 1142  
Fax. 425 867 4121  
[www.physio-control.com](http://www.physio-control.com)

#### SALES OFFICES

**Physio-Control UK**  
Medtronic Ltd  
Suite One, Sherbourne House  
Croxley Business Park  
Watford, Herts  
WD18 8WW  
Tel. 44 1923 212 213  
Fax. 44 1923 241 004

**Canada**  
Medtronic of Canada  
6733 Kitimat Road  
Mississauga, ON  
L5N 1W3  
Tel. 888 879 0977  
Fax. 416 430 6115